



CHERBOURG PILOT STATION FOR VESSEL ENTERING IN CHERBOURG HARBOUR



CONTACTS

E-mail : cherbourg.pilot@wanadoo.fr

Phone : + 33 (0) 233 205 123 mobile 24/24 : + 33 (0) 607 751 891

Address : Quai General Lawton Collins - 50100 Cherbourg – FRANCE

PROCEDURE FOR CHERBOURG PILOT BOARDING AND DISEMBARKING OFF CHERBOURG

- **At least 3 days before arrival:** Vessel will advise **CHERBOURG PILOT STATION** with ETA by mail or by phone.
- **4 HOURS** before arrival at Pilot Boarding Position CH 1: vessel will call **JOBOURG TRAFFIC** on **VHF channel 13**.
- **2 HOURS** before arrival at Pilot Boarding Position CH1: Vessel will call **CHERBOURG SIGNAL STATION** to confirm ETA on **VHF channel 12**.
- **1 HOUR** before arrival at Pilot boarding Position CH1: vessel will call **CHERBOURG SIGNAL STATION** to confirm ETA and ask for the side of Pilot ladder on **VHF channel 12**.

MEANS

Pilot boarding and disembarking will be carried out using **Cherbourg Pilot Boats**.

OBSERVE STRICTLY OMI REQUIRED BOARDING ARRANGEMENT (see last sheet of this procedure)

In most case please prepare PILOT LADDER only.

If using COMBINATION LADDER then ACCOMODATION LADDER must be at least 5 Meters above the water

BOARDING POSITIONS

In the vicinity of safe water mark "CH1" in position: $\Phi=49^{\circ} 43.5' N - G=001^{\circ}42.0' W$

NB: CH1 mark is not a real buoy but a **VIRTUAL A.I.S. MARK** only visible on AIS display.

MANOEUVRING TIME

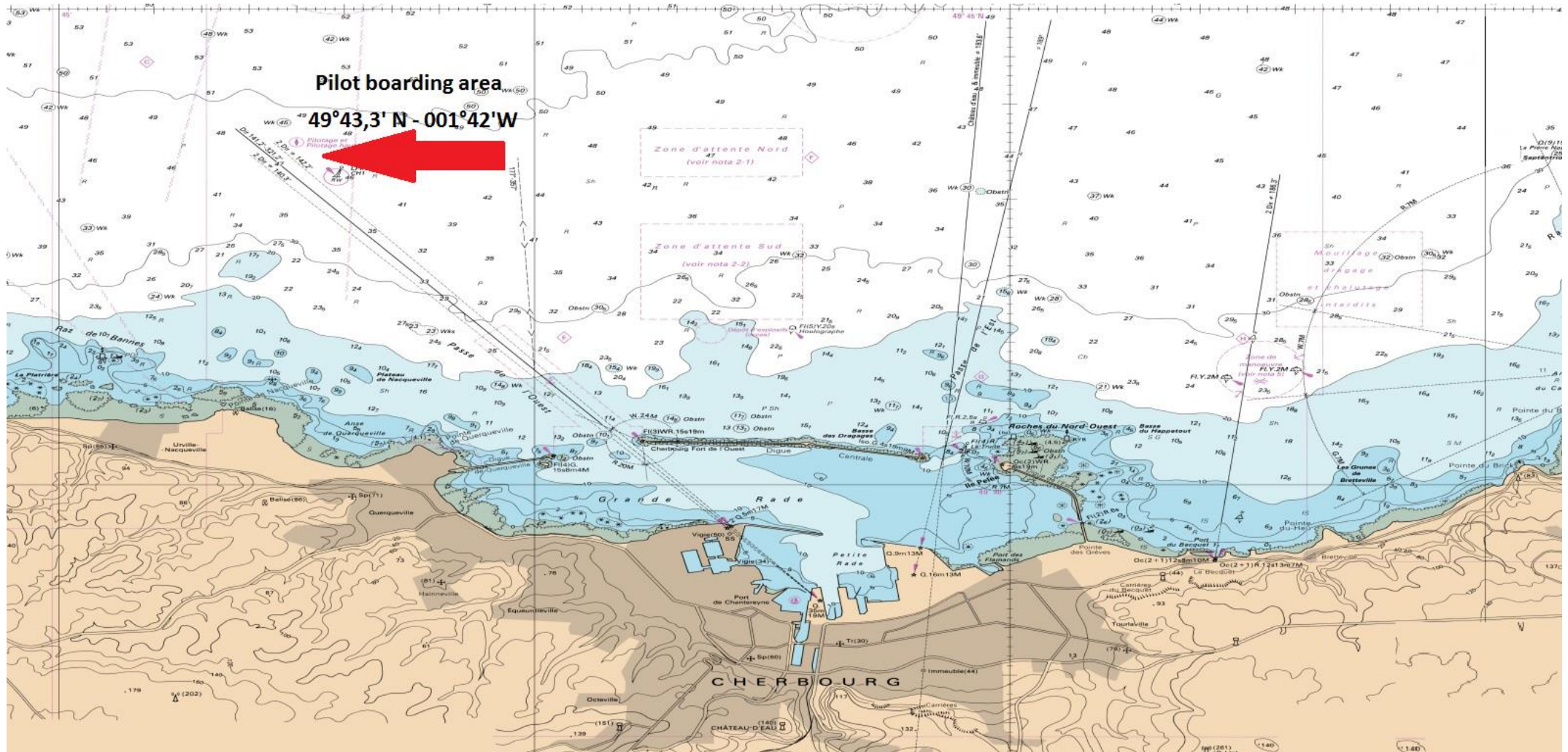
For large passenger vessel please consider there is 6 nautical miles from Pilot boarding position and berth.

It takes 1h30 minutes from "Pilot on board" and "all lines fast" and 15 minutes in addition if the vessel has to swing.

GANGWAY

The shore gangway will be positioned only when all lines fast, it takes at least 10 minutes more to get the onboard access ready.

Pilot boarding area
49°43,3' N - 001°42' W



REQUIRED BOARDING ARRANGEMENTS FOR PILOT



INTERNATIONAL MARITIME ORGANIZATION

In accordance with SOLAS Regulation V/23 & IMO Resolution A.1045(27)

INTERNATIONAL MARITIME PILOTS' ASSOCIATION

H.Q.S. "Wellington" Temple Stairs, Victoria Embankment, London WC2R 2PN Tel: +44 (0)20 7240 3973 Fax: +44 (0)20 7210 3518 Email: office@impahq.org

This document and all IMO Pilot-related documents are available for download at: <http://www.impahq.org>

